

Window Blind Separation Add-on Set

Installation and Operation Instructions

Properly installed, this product will provide you with years of service
Please read the following instructions thoroughly before installing

See our Installation Demo Video at
www.privabeam.com/customerservice/install-demo/

Check If Model # Fits Your Blind

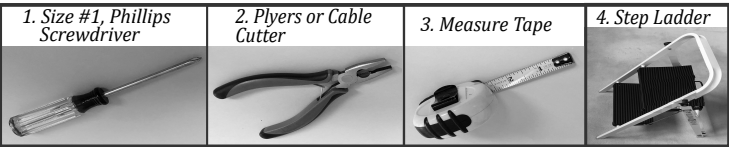
Model #		BCS21	BCS22	BCS23
Blind Width (Inches)	Faux Wood Type Blinds	Up to 26"	26" - 37"	37" - 50"
	Vinyl or Aluminum Type Blinds	Up to 32"	32" - 45"	45" - 62"

Note: 1) Mismatch of Model # to your Blind width may cause malfunction and damage to the product.
2) This product does not work well with types of window blinds that have slats wider than 2", or that do not have through holes on their slats.

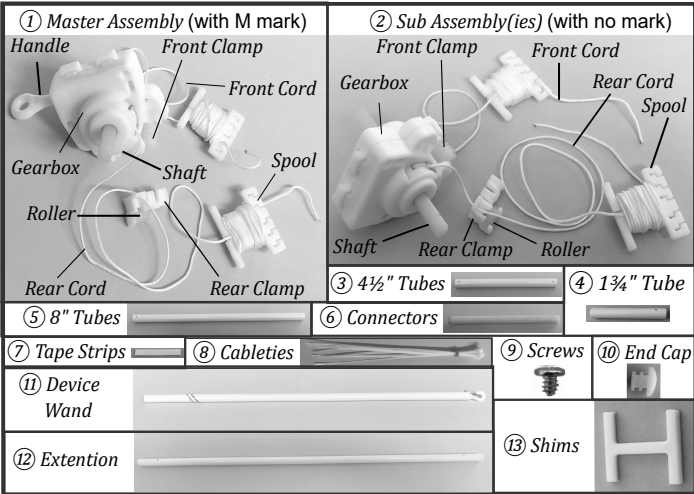
Preview



Recommended Tools for installation



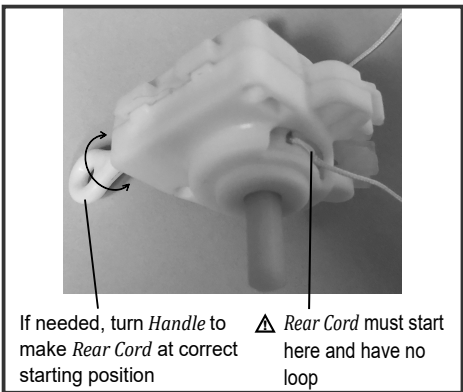
Check Components in Package



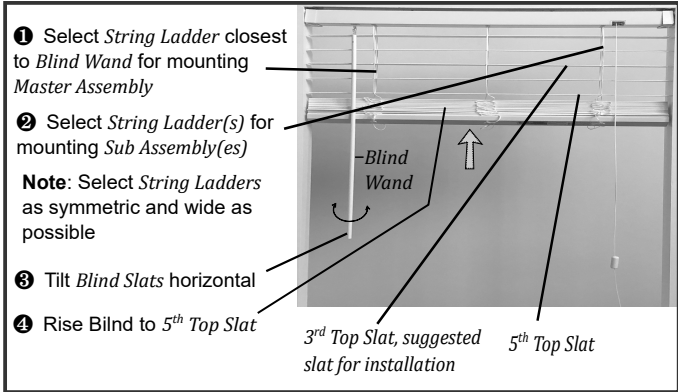
Count of components in package							
Model #	BCS21	BCS22	BCS23	Model #	BCS21	BCS22	BCS23
2 Sub Assembly	1	2	3	7 Tape Strips	2	3	4
3 4 1/2 inch Tube	1	2	3	8 Cableties	10	20	20
4 1 3/4 inch Tube	1	2	3	9 Screws	10	20	20
5 8 inch Tube	2	4	6	13 Shims	2	3	4
6 Connector	3	4	5	10 to 12	1	1	1

Installation Procedure

STEP 1: Check Gearbox of Master Assembly

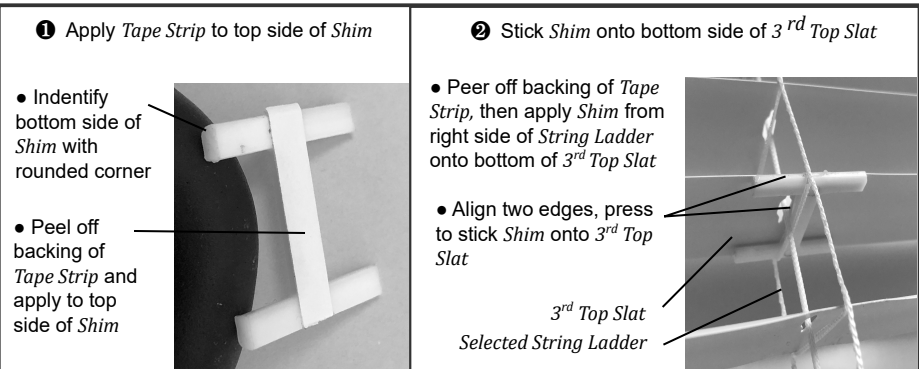


STEP 2: Set Blind for installation

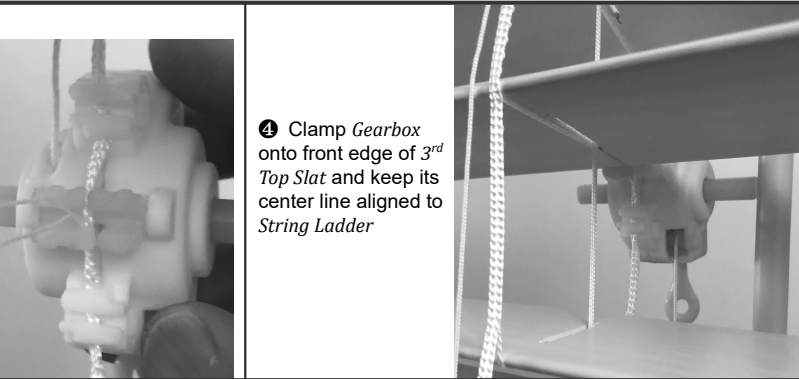
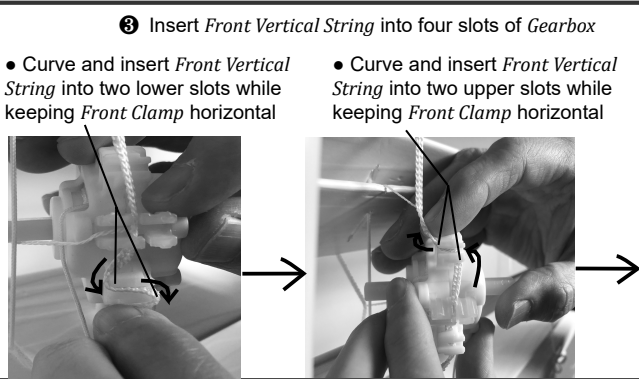
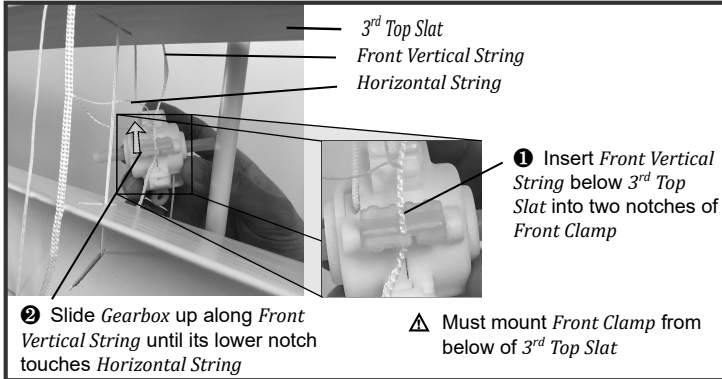


STEP 3: Install Master Assembly on 3rd Top Slat and Selected String Ladder

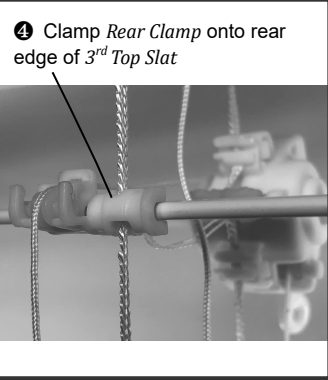
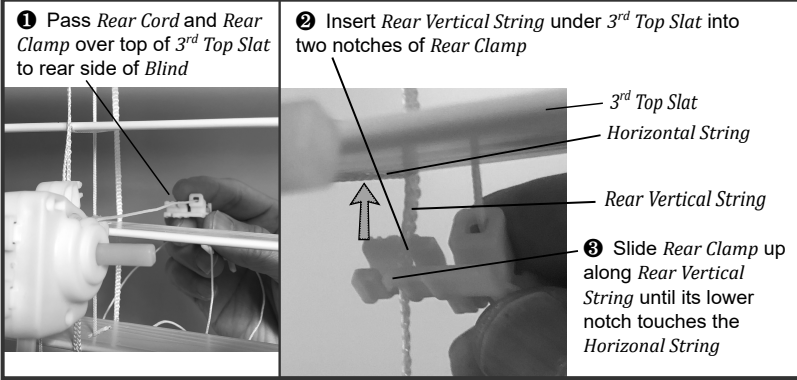
3.1. For Vinyl or Aluminum Type Blinds, mount Shim on 3rd Top Slat; if not, skip to next step



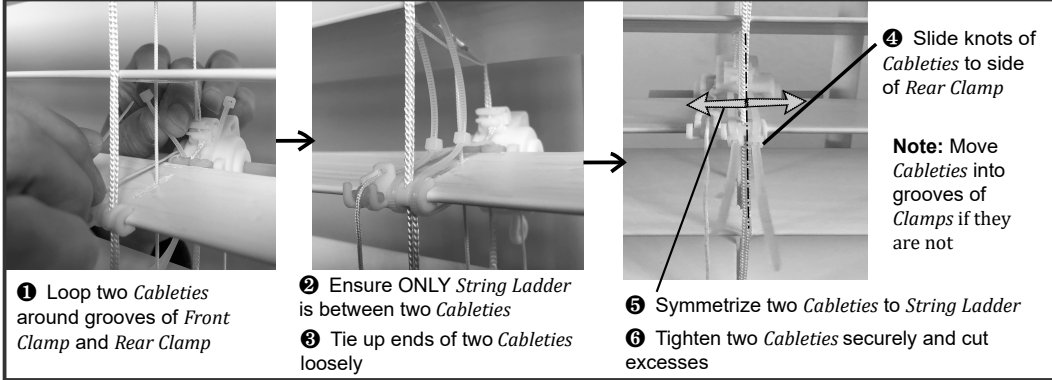
3.2. Mount Front Clamp of Gearbox



3.3. Mount Rear Clamp



3.4. Affix Gearbox to slat

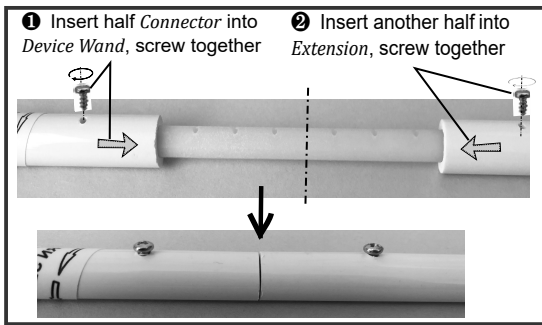


STEP 4: Install Sub Assemblies on 3rd Top Slat and Selected String Ladders

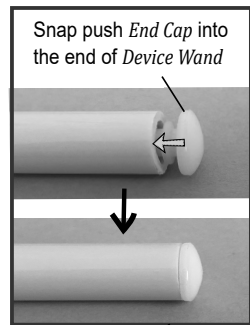


STEP 5: Prepare Device Wand

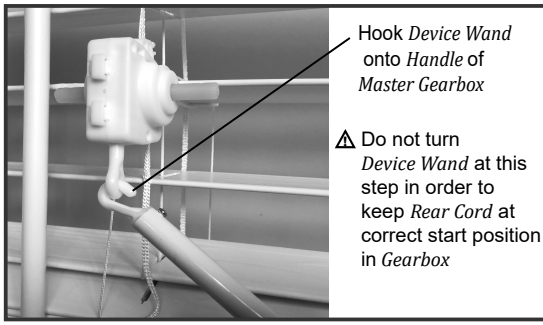
5.1. If Device Wand is not long enough, add Extension



5.2. Insert End Cap



STEP 6: Mount Device Wand

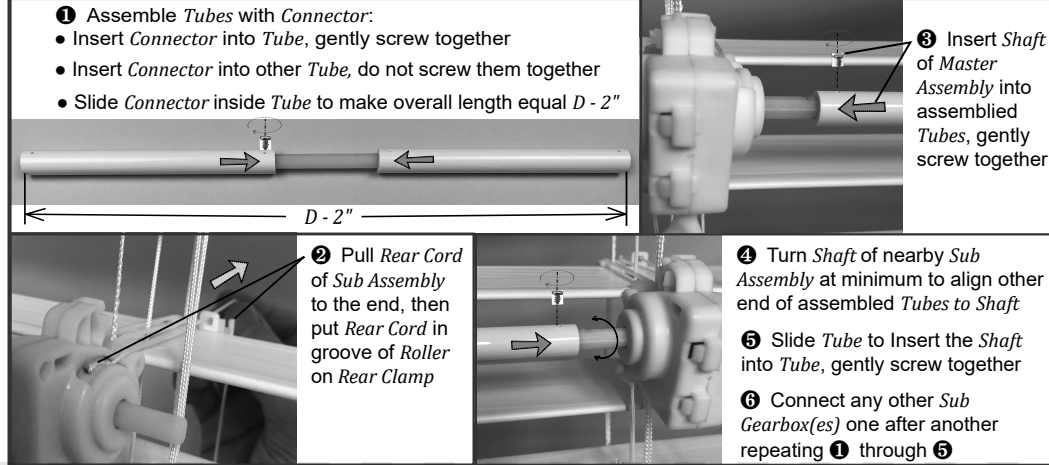


STEP 7: Connect Gearboxes with Tubes

7.1. Select proper Tubes

1 Measure distance D between Selected String Ladders	
2 Select Tubes needed for each connection between Assemblies from table below:	
D	Tubes selected
7.5" - 11"	Use one 4 1/2 inch Tube, one 1 3/4 inch Tube and one connector
11" - 14"	Use one 8 inch Tube, one 1 3/4 inch Tube and one connector
14" - 17.5"	Use one 8 inch Tube, one 4 1/2 inch Tube and one connector
17.5" - 21"	Use two 8 inch Tubes and one connector
21" - 29"	Use two 8 inch Tubes, one 4 1/2 inch Tube and two connectors

7.2. Connect Assemblies with selected Tubes



STEP 8: Release Rear Cords and Front Cords

